



# CoolCOIL™

## NUTRIENT RESERVOIR CHILLER

# OPERATION MANUAL

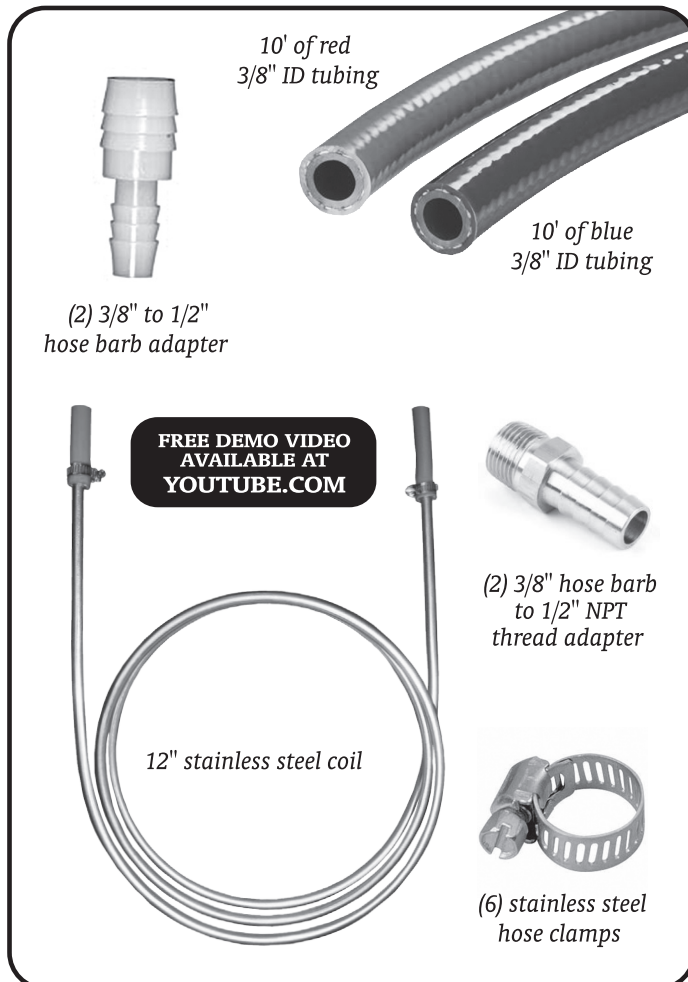
**IMPORTANT SAFETY INFORMATION • DO NOT DISCARD**

[www.hydroinnovations.com](http://www.hydroinnovations.com)

## PRODUCT OVERVIEW

The CoolCOIL is a drop in nutrient reservoir cooler intended for cooling up to 100 gallons. This stainless steel coil will not corrode in nutrient solution and will last a lifetime.. The coil can be used for reservoirs up to 125 gallons but its efficiency can be affected by several factors including room temperature, cooling water temperature, and your desired reservoir temperature, so take these variables into account when deciding how many CoolCOIL to install in your reservoir.

## PACKING LIST



## FEATURES

- Drop in coil for cooling nutrient reservoirs.
- 3/8" stainless steel tubing.
- Stainless steel hose clamps.
- Includes 20' of 3/8" high quality tubing.
- Includes 3/8" hose barb to 1/2" NPT thread adapters.
- Can be used drain to waste or with a recirculation system.
- Requires cool flowing water to operate.
- Can be used separately or inline with other water-cooled equipment.
- Thermostat's and gateway valves available to control temperatures.

## INSTRUCTIONS

1. Slip the red and blue tubing over the inlet/outlet of the CoolCOIL, overlapping the coil by at least 1". Secure with hose clamps.
2. Place CoolCoil in the reservoir meant to be cooled.
3. Make sure that reservoir water is circulated around the CoolCOIL for best results.
4. For using inline with a water-cooled system, use the 3/8" hose barb to 1/2" NPT adapter and install to a 1/2" NPT port on both the supply and return manifolds. Attach the other end of the blue tubing to the cold water supply manifold and attach the other end of the red hose to the return manifold. This will allow cold water to flow through the coil where it will absorb heat from the reservoir and then return back to the cooling reservoir via the return manifold. Longer tubing may be needed if running over long distances.
5. For using with a pump and cooling reservoir the CoolCOIL can be connected directly to the pump. Chilled water is pumped from the cooling reservoir through the coil which absorbs heat from the nutrient reservoir. The supplied 3/8" to 1/2" hose barb adapters may be used as needed.

**IF YOU REQUIRE ADDITIONAL ASSISTANCE  
PLEASE CONTACT US:**

**Email: [support@hydroinnovations.com](mailto:support@hydroinnovations.com)**

**Phone: (512) 321-7575**

**HYDRO INNOVATIONS**

**1924 HWY 95 N • BASTROP, TX 78602**